

MRP

SUPPORTS

MRP PORCELAIN WIND PAVERS Specifications

NEW!

MRP PORCELAIN WIND PAVERS

MRP Porcelain Wind Pavers can be used to create rooftop patios, gathering spaces, and walking paths. When adhered to our MRP Paver Grate and fastened to our Pedestals, MRP Porcelain Wind Pavers have been tested to mitigate wind flows up to 165 mph. Made for outdoor use, these pavers are slip, chemical, and fade resistant, and a no maintenance product.



PORCELAIN PAVERS

MATERIAL

Porcelain

DIMENSIONS & WEIGHT

24" x 24" x $\frac{3}{4}$ " (nominal); 23 $\frac{1}{2}$ " x 23 $\frac{1}{2}$ " x $\frac{3}{4}$ " (actual) / Weight: 25 lbs.

COLORS

Various colors and styles available

BREAKING STRENGTH

≥ 250 lbf (ASTM C648)

PAVER GRATE

MATERIAL

A blend of Nylon 66/6 with 30% glass

DIMENSIONS & WEIGHT

23.5" x 23.5" x 44" / Weight: 3 lbs. per grate

SYSTEM CONNECTIONS

PAVER TO PAVER GRATE

3M 550 adhesive

PAVER GRATE TO PEDESTAL

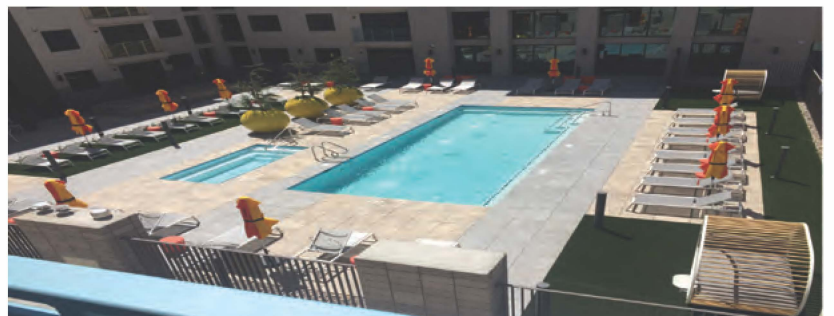
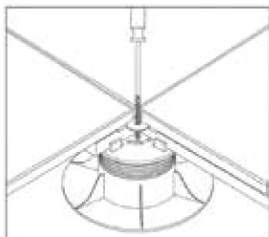
MRP Fastening Kit

WIND UPLIFT RESISTANCE

350 psf (per vacuum testing by independent lab)

WIND FLOW RESISTANCE

165 mph (per testing by independent lab)



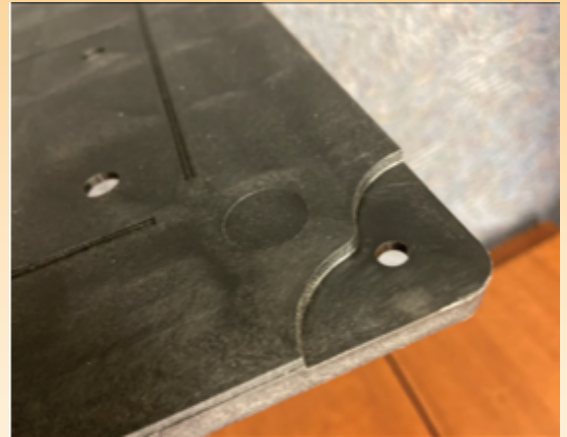
MRP

SUPPORTS

MRP PORCELAIN WIND PAVER TO MRP PAVER GRATE ADHESION Instructions

MRP PAVER GRATE

MRP Paver Grate enhances impact resistance for porcelain pavers in pedestal applications. It also provides a structural surface for loose laid pavers on deck pedestals. Engineered to attach to the black series pedestals, the MRP Paver Grate creates a stable and secure foundation and mitigates wind uplift resistance.



ADHERING PAVER TO MRP PAVER GRATE PRIOR TO INSTALLATION:

STEP #1: PAVER GRATE PLACEMENT

Place MRP paver grate on a clean, level surface, so that the solid side is face up and the waffle side is face down.

STEP #2: ADHESIVE

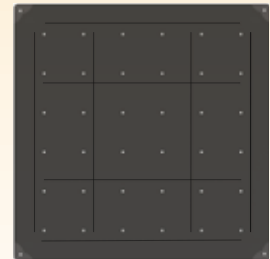
Run a 1/4" diameter bead of 3M 550 adhesive 3/4" from the edge and around the perimeter of the grate and the bead lines in between of grate. **IMPORTANT:** For proper adhesion and performance, adhesive must be applied exactly as shown.

STEP #3: PAVER PLACEMENT ON PAVER TRAY

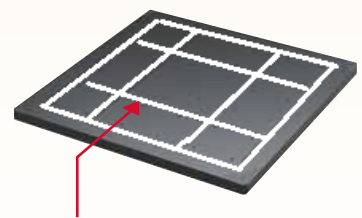
Place the Porcelain Tile squarely onto the adhesive side of the MRP Paver Tray, carefully aligning by hand to make sure that the paver does not extend beyond any edge of the tray.

STEP #4: ASSEMBLY STACKING

Repeat the first three steps to create a MRP Paver Tray Assembly. Stack assemblies no more than (5x) assemblies high. Let them remain stacked for 24 hours to allow for the adhesive to cure, before handling (SEE MRP FOR QUICKER CURE TIMES).



This Side Up



Adhesive
Recommended
Bead Line

